



## LIU Mission

To improve the DPPA's ability to manage through shocks, enable DPPA and partners to better understand livelihoods and coping strategies of vulnerable populations and help them be better equipped to anticipate shocks through improved early warning through technical support to the DPPA's efforts to decentralize information gathering, analysis and response capacity.

## LIU: Expected Results

- Establishment of a viable, self-sustaining livelihoods unit within the DPPA Early Warning Department.
- Livelihoods baselines completed in Tigray, Amhara, Oromiya, Harari, Benshengul and Gambella regions by August 2009.
- Integration of livelihoods-based needs assessments in to regular monitoring.
- Certification of Ethiopian 50 nationals from federal and regional staff who meet international standards as qualified HEA team leaders trainers and facilitators.
- Two local government staff trained on the use of the baselines for early warning purposes in each *woreda* where a livelihoods baseline has been taken.
- Development of livelihoods training modules and packages.
- Contribution to the development of non-food needs assessment methodology.

Livelihoods Integration Unit

c/o DPPA

Near Gandhi Hospital

Building 2, Room 35

P.O.Box 13699

Addis Ababa, Ethiopia

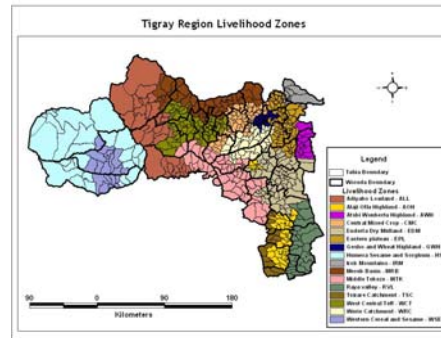
+251 115 54 72 72

[www.dppc.gov.et/livelihoods/  
livelihoods\\_integration\\_unit.htm](http://www.dppc.gov.et/livelihoods/livelihoods_integration_unit.htm)



## Livelihoods Integration Unit





# LIVELIHOODS INTEGRATION UNIT

## Why livelihoods.

A livelihood is the sum of ways in which households make ends meet from year to year and how they survive (or fail to survive) through difficult times. There is increasing interest in using livelihoods analysis as the 'lens' through which to view a number of subjects. These subjects range from emergency response to disaster mitigation to longer-term development. This interest rests on two basic observations:

- Information about a given area or community can only properly be interpreted if it is seen against the context of how people live.
- Interventions can only be designed in ways appropriate to local circumstances if the planner knows about local livelihoods and whether or not a proposed intervention will build upon or undermine existing strategies.

## The analytical framework.

The LIU uses the Household Economy Approach (HEA) – an analytical framework that aims to show: how households in different areas live in typical years, and how they will be affected by any number of 'shocks', ranging from natural hazards (drought, flood, cyclones) to market hazards (changes in price, closure of markets due to war) to health hazards (HIV/AIDS, guinea worm) and how households respond without adopting damaging coping strategies. This information is ultimately used to define which types of responses (food, cash, or in kind non-food) are most appropriate.

$$\text{Baseline} + \text{Hazard} + \text{Response} = \text{Outcome}$$

The basic principle underlying the HEA is that an analysis of local livelihoods is essential for a proper understanding of impact – at the household level – of hazards such as drought.

## Potential uses of livelihoods baseline data.

Livelihoods baseline data can be used in a variety of ways:

- To assess emergency food and cash needs
- To identify possible improvements to existing assessment and monitoring systems
- To suggest possible non-food interventions in an emergency
- To provide a geographical framework (livelihood zones) for conducting nutrition surveys and help in the interpretation of nutritional status data
- To provide information that could be used to strengthen targeting
- To provide evidence to support priority development programming