



## Information Sheet Number 1: – Livelihood Integration Unit

### Background

USAID is supporting the establishment of a Livelihoods Integration Unit (LIU), within the national Early Warning Department of the DPPA. This unit is committed to the goal of capacity building, with an objective of handing over its core functions to the DPPA within three years. The LIU will achieve this through: maximizing participation of the DPPA in project activities; information sharing and exchange of ideas between government staff and other stakeholders at all levels; standardization of approach; ongoing training; developing training materials; establishing a nation-wide comparable set of regional livelihoods baselines; integrating these baselines into the existing early warning system; and gaining general agreement around national standards for livelihoods-based early warning and emergency food and non-food assessments.

### Why livelihoods?

A livelihood is the sum of ways in which households make ends meet from year to year and how they survive (or fail to survive) through difficult times. There is increasing interest in using livelihoods analysis as the 'lens' through which to view a number of subjects. These subjects range from emergency response to disaster mitigation to longer-term development. This interest rests on two basic observations.

- Information about a given area or community can only properly be interpreted if it is seen against the context of how people live.
- Interventions can only be designed in ways appropriate to local circumstances if the planner knows about local livelihoods and whether or not a proposed intervention will build upon or undermine existing strategies

The Early Warning System of Ethiopia has well-developed and sophisticated technical tools for its regular monitoring system. However, the system has been constrained by the lack of a clear and transparent methodology for estimating number of people affected and estimating emergency food and non-food needs. The livelihoods approach considers livelihoods as a whole and enables a more integrated analysis and assessment process that balances food and non-food responses to address the full range of basic needs.

### Potential uses of livelihoods baseline data

Livelihoods baseline data can be used in a variety of ways:

- *To assess emergency food and cash needs*
- *To identify possible improvements to existing assessment and monitoring systems*
- *To suggest possible non-food interventions in an emergency*
- *To provide a geographical framework (livelihood zones) for conducting nutrition surveys and help in the interpretation of nutritional status data (see example below)*
- *To provide information that could be used to strengthen targeting*
- *To provide evidence to support priority development programming*

### LIU Planned activities for coming 6 months

#### Baseline work - Tigray

22-26 January: Baseline training  
 29 January–3 March: Phase 2 baseline fieldwork  
 5-10 March: Baseline analysis  
 12-17 March: Using the baseline/Outcome analysis training

#### Baseline work - Amhara

19- 23 March: Trainer of trainers course  
 26-28 March: Livelihood zoning  
 2-6 April: Baseline training  
 9 April – 11 May: Phase 1 baseline fieldwork  
 Dates for phase 2 baseline work to be finalized at the end of March

#### Monitoring

February 2007: Monitoring Pilot initiated in SNNPR

#### Other activities planned include:

- Woreda training in Tigray in preparation for seasonal assessments.
- Belg seasonal assessment preparation
- One-day introductions to livelihoods analysis for interested stakeholders (to be available on request)

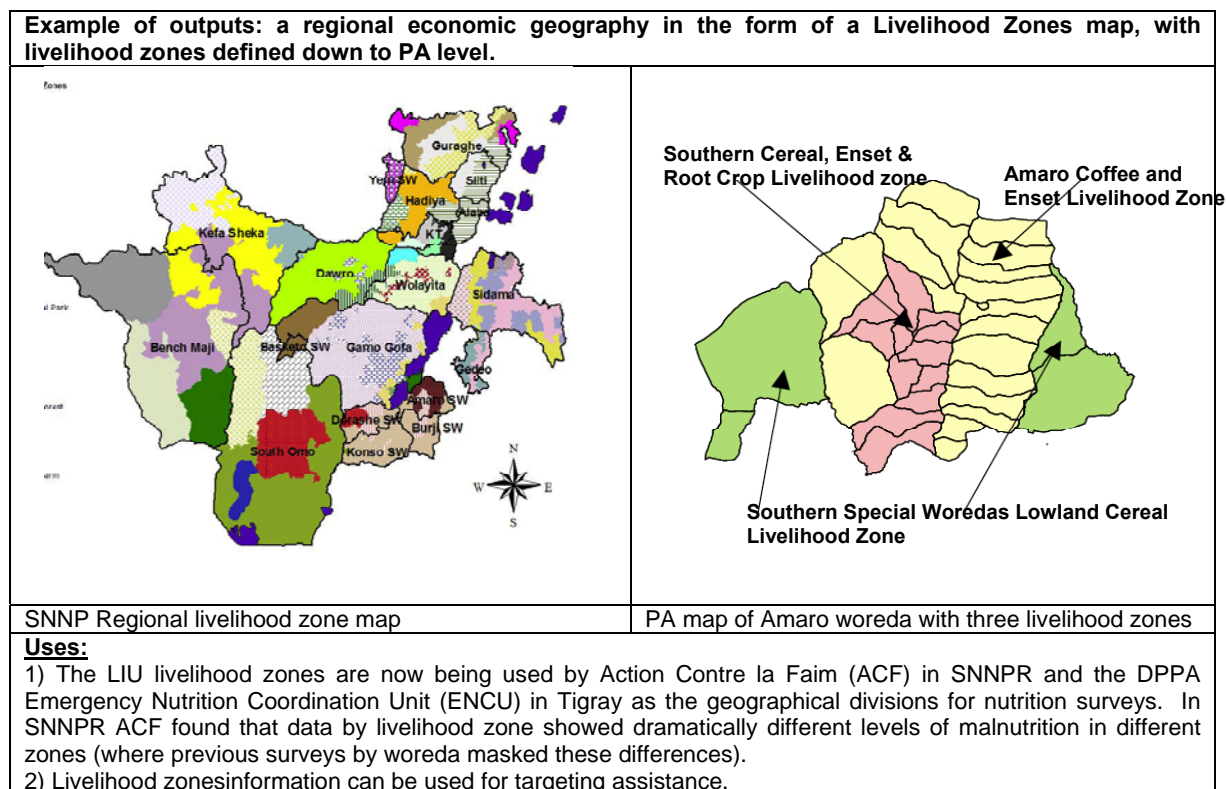
**Current LIU Project Results**

- The pilot FEWS NET project in SNNPR that led to the development of the LIU project completed baselines in over 40 livelihood zones and over 100 woredas (see [www.dppc.gov.et](http://www.dppc.gov.et))
- To date, the LIU project has completed baselines for four livelihoods zones in the Tigray region and is currently completing the remaining twelve.
- The project has facilitated seasonal analysis in the SNNP region, building upon the livelihoods baseline work initially carried out by FEWS NET.
- Capacity building including: baseline training, using livelihoods baselines to analyze the impact of a hazard for senior managers; team leader training in data analysis, training of trainers for the SNNPR seasonal assessment.

**Expected Results**

- Establishment of a viable, self-sustaining livelihoods unit within the DPPA Early Warning Department
- Livelihoods baselines completed in Tigray, Amhara, Oromiya, Harari, Benshengul and Gambella regions by August 2009.
- Certification of Ethiopian 50 nationals from federal and regional staff who meet international standards as qualified HEA team leaders.
- Minimum of 2 local government staff trained on the use of the base line for early warning purposes in each woreda where a livelihoods baseline has been taken.
- Development of livelihoods training modules and packages
- Contribution to the development of non-food needs assessment methodology.

**Figure 1: Example of an output from the Livelihood baseline data**



**For further details – please contact Jane MacAskill, Chief of Party, LIU Program. Tel: 0115 54 64 34 Mob: 0911 54 74 72. [macsharif@iconnect.co.uk](mailto:macsharif@iconnect.co.uk)**

*This bulletin is made possible by the support of the American people through the United States Agency for International Development (USAID). The contents of this bulletin are the sole responsibility of The Food Economy Group and do not necessarily reflect the views of USAID or the United States Government.*